

Face Mask Pattern

Free pattern

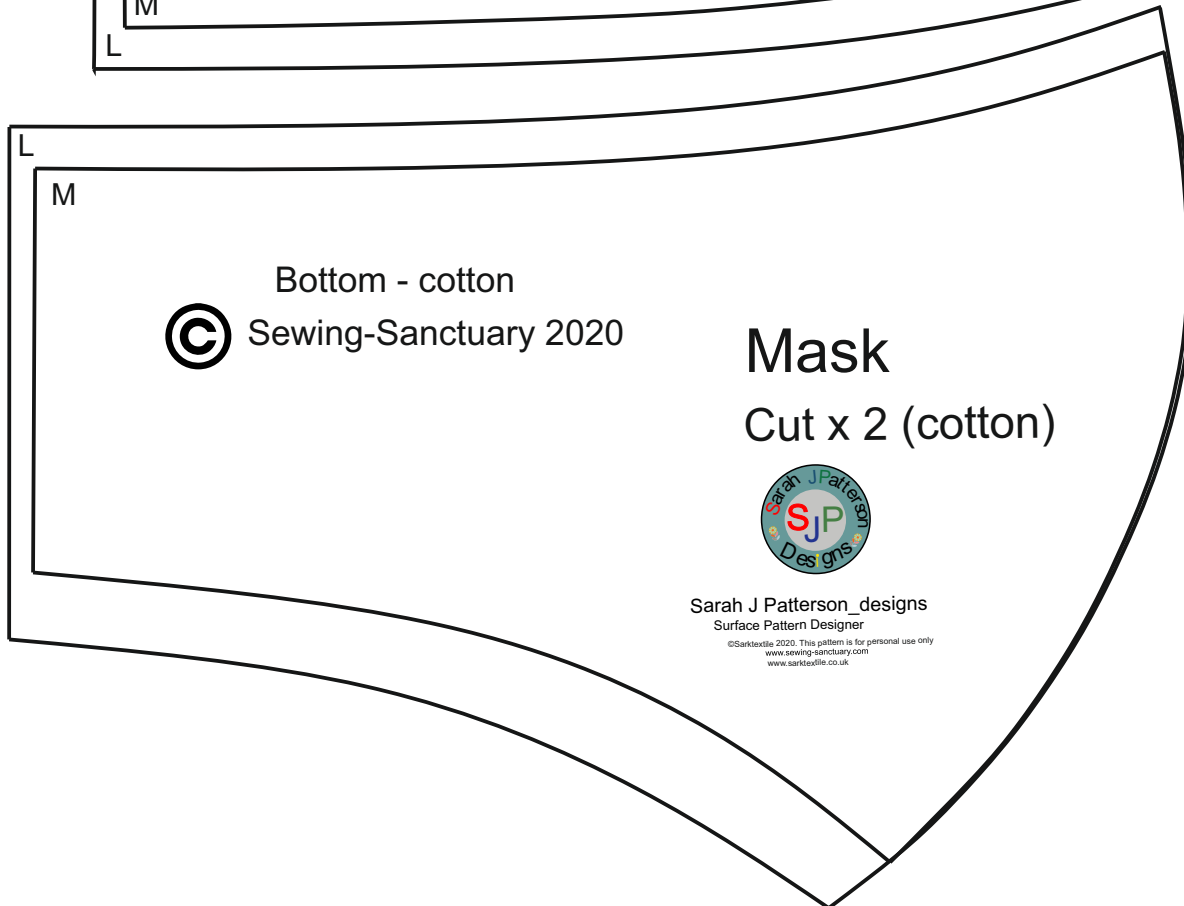
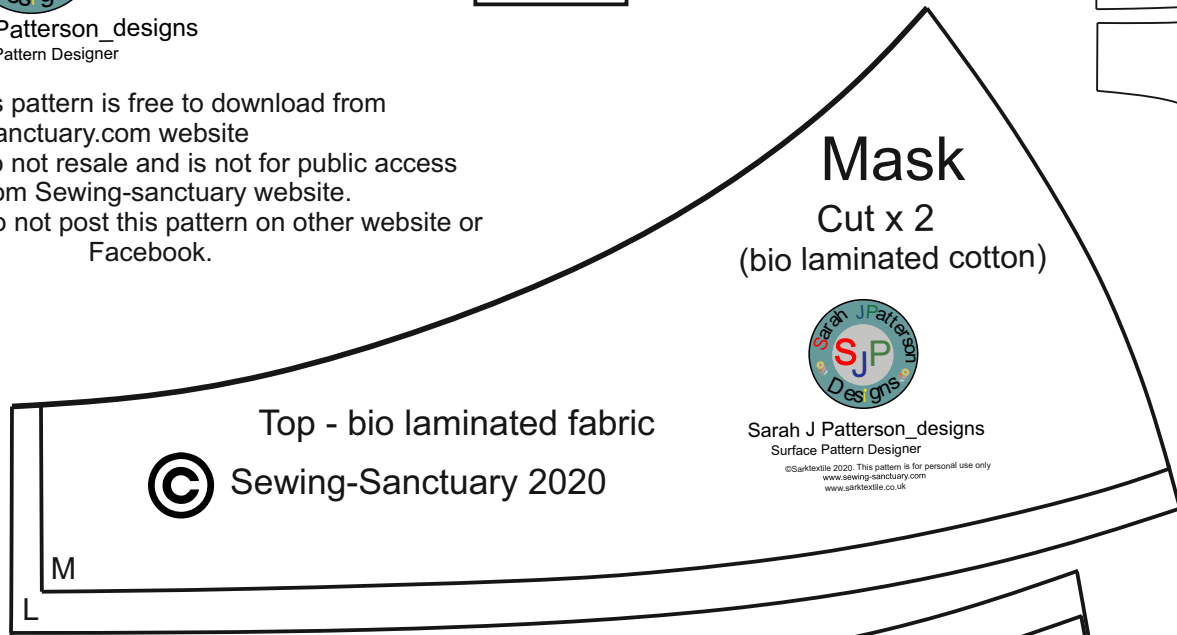
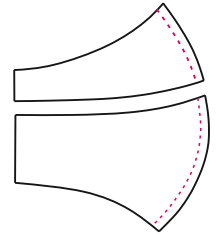


Sarah J Patterson_designs
Surface Pattern Designer

While this pattern is free to download from sewing-sanctuary.com website please do not resale and is not for public access except from Sewing-sanctuary website. Please do not post this pattern on other website or Facebook.

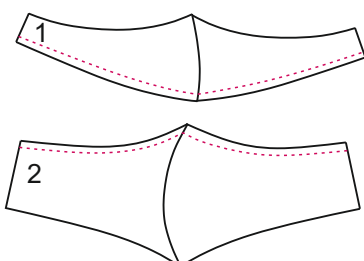
Test box
2cm

Step 1
Sew curve line with 1/4"



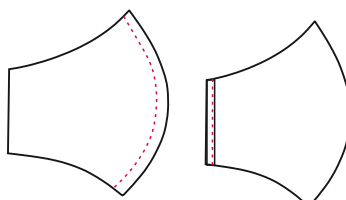
Step 2

No.1 & no.2 Right side together to match red dot line and sew with 1/4"



Step 3

Sew the curve line then fold the edge twice into wrong side and top stitch it.



Step 4

Step 2 right side up and step 3 right side down and match the middle sewing line. sew the top and bottom with 1/4" make sure you go forward and backward couple of times when you pass the filter liner beginning and end.

Face Mask Pattern Free pattern



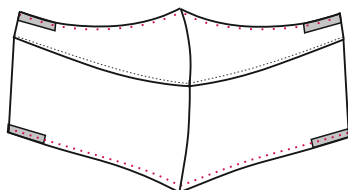
Sarah J Patterson_designs
Surface Pattern Designer

While this pattern is free to download from sewing-sanctuary.com website please do not resale and is not for public access except from Sewing-sanctuary website. Please do not post this pattern on other website or Facebook.



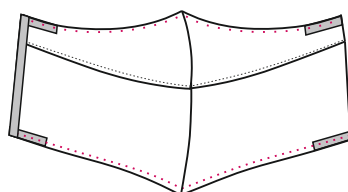
Step 5

Turn it right side out and top stitch for the top and bottom close to the edge. make sure outer corners fold them in before you top stitch it.



Step 6

Fold edge 1/4" and insert 27cm 4mm elastic then fold 3/8" and top stitch it. Repeat for the other side.



Step 7

insert a medical filter.

